

Newcastle High School Upgrade Proposal



NEWCASTLE
HIGH SCHOOL



P&C Presentation
Term 1 2022
Dr. Janene Rosser





An example of a new flexible learning space delivered by School Infrastructure NSW

Newcastle Education Campus

Project update

February 2022

Investing in our schools

The NSW Government is investing \$7.9 billion over the next four years, continuing its program to deliver 215 new and upgraded schools to support communities across NSW. This is the largest investment in public education infrastructure in the history of NSW.

The NSW Department of Education is committed to delivering new and upgraded schools for communities across NSW. The delivery of these important projects is essential to the future learning needs of our students and supports growth in the local economy.

Newcastle Education Campus

The NSW Government 2021/2022 Budget includes funding for the Newcastle Education Campus (NEC) which will be located on the main Newcastle High School site.

Masterplanning for the site has been completed and includes upgrades to the existing high school and expanded facilities suitable for shared use with the community. Additionally, space has been allocated for a future new primary school. This will be subject to enrolment demand.

A business case seeking government approval to proceed with the upgrade to the high school has been submitted. The preferred option includes:

- new flexible learning spaces to support future student enrolment growth
- a new hall and library
- new science laboratories, kitchens, canteen and student facilities
- new support class facilities.

Next steps

- Consideration of the business case.
- Ongoing development of the design in consultation with representatives from the Department of Education and Newcastle High School, architects, planners and design professionals.
- Joint-use opportunities are being considered for the provision of facilities that can be shared with the community.

Newcastle Education Campus

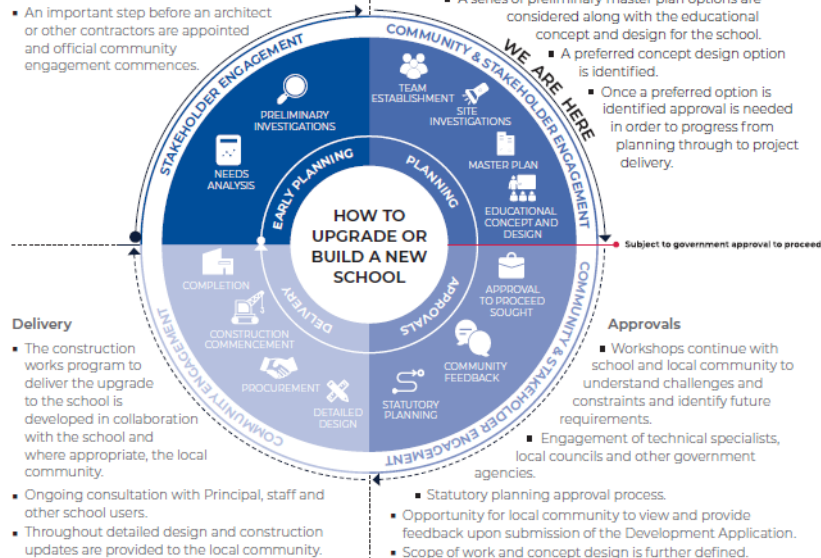
The information below takes you through the journey of how to upgrade, or build a new school

Early planning

- Consideration and studies of demographic trends, education requirements, the condition of the existing school buildings, catchment boundaries, heritage requirements, transport links and partnership opportunities.
- Doing so means that we:
 - consider the needs of the local area now and into the future.
 - ensure the right school is designed for the community.
- An important step before an architect or other contractors are appointed and official community engagement commences.

Planning

- Consultants such as architects and project managers are appointed.
- Investigation and review of site and development of master plan options.
- Master planning considers options for the general size, shape and form of buildings for a specific school site.
- A Project Reference Group (PRG) is established.
- Operational, educational and service delivery factors are understood and considered by the PRG.
 - A series of preliminary master plan options are considered along with the educational concept and design for the school.
 - A preferred concept design option is identified.
 - Once a preferred option is identified approval is needed in order to progress from planning through to project delivery.



The Government Announcement

“The NSW Government is committed to delivering an upgrade to Newcastle High School. Funding announced as part of the 2021-22 State Budget underpins this commitment and enables the commencement of the project planning and design process and the Department of Education to start engaging with the school community about the project....

The Government Announcement

“...Once the project scope and delivery approach has been confirmed, funding will be allocated to ensure the project meets the needs of the school community.

Start and completion dates will be provided once a delivery programme has been agreed, subject to completion of further design and planning work.

The Government Announcement

...School Infrastructure NSW will continue to share information with the school community as the project progresses through the planning, design and delivery stages. “

What has happened to date?

- 10 year conversation
 - Newcastle Education Precinct
 - Newcastle Education Campus
 - Site logistics
 - Demographics and enrolment modelling
 - Draft Architecture and Planning
 - Business case
 - School consultation
 - Budget announcement
- ...and now...
- Government public announcement imminent about the final outcome

School Context

Location

Newcastle High School is a large, comprehensive high school situated on two sites in the centre of Newcastle. The Parkway Ave site caters for students from Year 7 through to Year 12, and is the focus of this building project.

The Cooks Hill Campus delivers an alternative curriculum in partnership with Big Picture Education and caters for students from Year 9 through to Year 12. The school has strong links with its local community and active past student associations.

The Awabakal people are recognised as the traditional custodians of the lands on which Newcastle High School is situated.

Student Enrolment

There are currently close to 1200 students enrolled at Newcastle High School's Parkway Ave Site. At present 10% of students come from language backgrounds other than English and 9% identify as Aboriginal.

Staff

There are 83 teaching staff at NHS.





NEWCASTLE EDUCATION PRECINCT - ZONAL MASTERPLAN

25A NATIONAL PARK STREET, NEWCASTLE WEST 2302

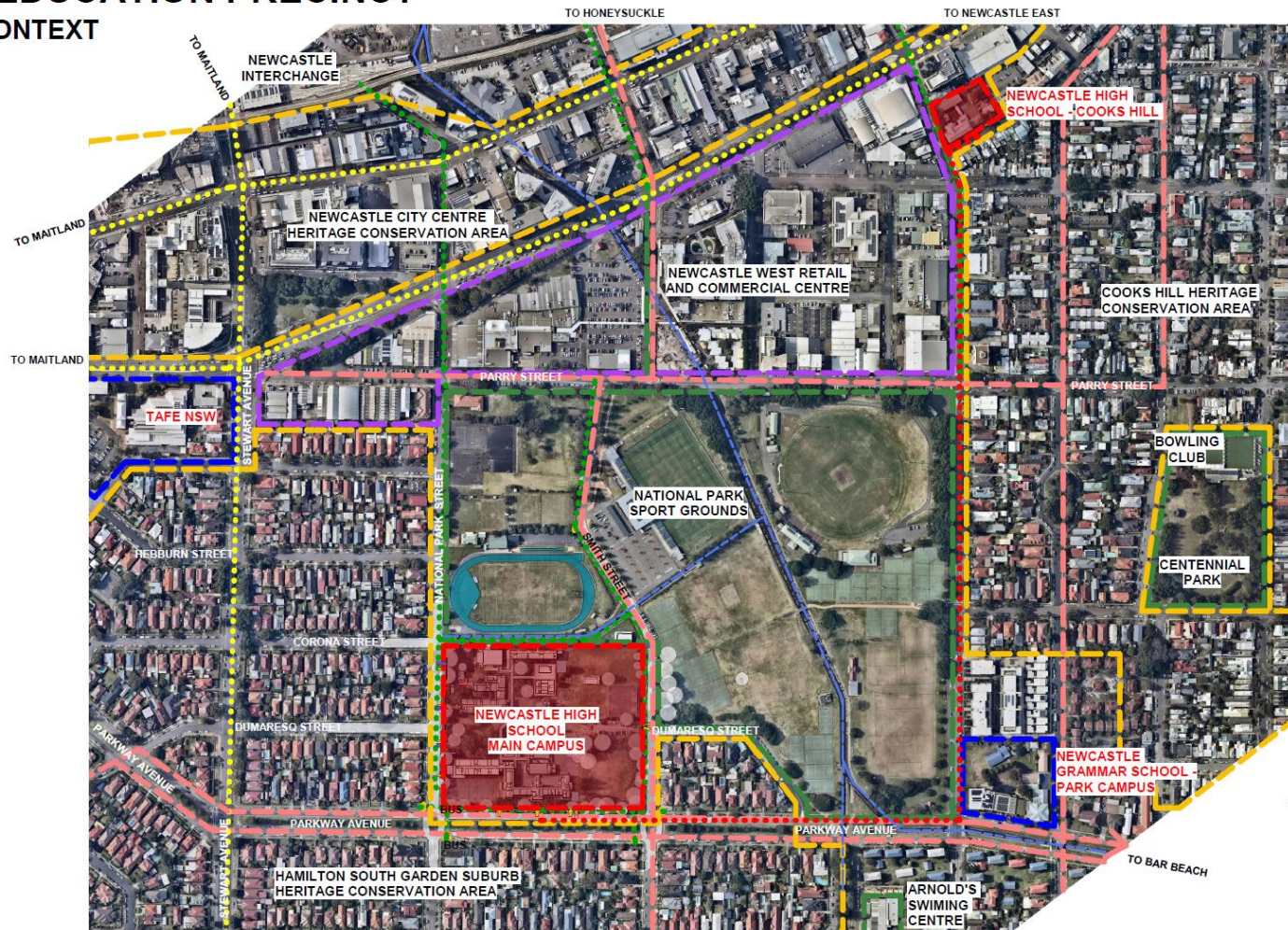
NEWCASTLE EDUCATION PRECINCT

SITE ANALYSIS - CONTEXT

LEGEND

CONTEXT

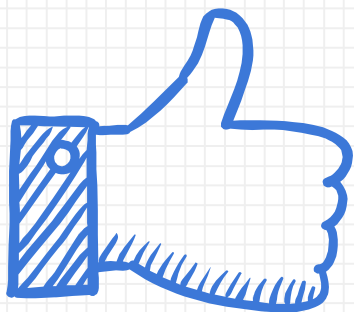
- SUBJECT SITES
- RETAIL / COMMERCIAL CENTERS
- SCHOOLS / EDUCATION CENTRES
- OPEN SPACE / RECREATION
- HERITAGE CONSERVATION AREA
- MAIN ROADS
- MAIN PEDESTRIAN WAY
- MAIN CYCLEWAY
- WATER COURSE
- VEHICULAR CONNECTION TO HIGH SCHOOL CAMPUSES



Next Steps?

- Awaiting government decision on the business case
- If approved...then
 - Funding and Staging
 - Consultation with the school community
- Planning – to the finer details
- Approvals
- Preparations for construction to commence





Q&A
Thank you